

TP 280 PTO K

TP 280 is a strong and compact wood chipper that is optimal for professional forestry. The wood chipper is mounted on the tractor's 3-point suspension and a dumper is mounted at the front of the tractor. The long ejector spout "blows" the chips over the tractor and directly into the dumper. Effect need from 135 to 200 hp.

To get the full benefit from the TP 280 it is necessary to have a tractor where the seat can be turned 180 degrees. With the chipper parallel to the direction of traffic the TP 280 is the perfect solution for row felling or for clear-cutting.

The professional touch to TP 280 is obvious both in the list of standard equipment, the high capacity of approximately 50 m³ per hour and the good chip quality. If you want an especially fine chip quality, for example for use in small stokers, the wood chipper can be equipped with sliver breakers in order to optimize the quality of the chips.

TP 280 is delivered with Stress Control System type TP PILOT K, where the user can operate the wood chipper's feeding system and at the same time monitor the rpm on the rotor and the feed rollers.

Standard on TP 280

- Integrated hydraulics system
- Three knives
- An anvil In Hardox 400
- Two hydraulically powered feed rollers which ensure a powerful feeding
- Hydraulic cylinder for backstop of moving rollers
- V-belt drive between PTO and rotor
- Ejector spout over the tractor
- Wipers to ensure against accumulation of material in the rotor housing
- Changeable casing in rotor housing
- Split upper rotor housing
- Automatic adjustment of the roller speed with the TP PILOT K
- Rotor lock for securing the rotor disc when changing knives
- Crane support for mounting of crane
- Stress Control System TP PILOT K
- Danfoss Hydraulic engine
- Solid crane funnel
- Comprehensive manual with spare parts list



TP 100

TP 150

TP 200

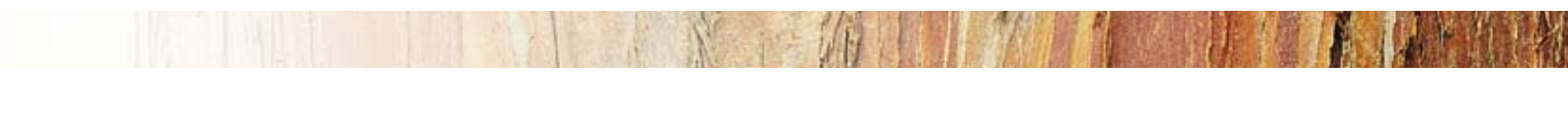
TP 250

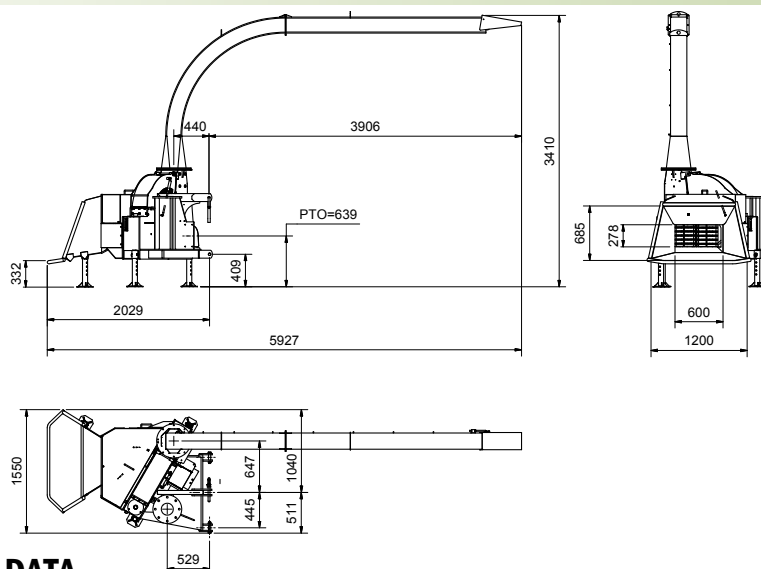
TP 230

TP 270

TP 280

TP 400





TECHNICAL DATA

Max wood diameter	280 mm
Max opening	H x W = 280 x 300 mm
Operation	Return/forward/stop of feed rollers through operating bar (yellow)
Chipper principle	Disc
In feed angle	30°
Feeding angle	Parallel to driving direction
In feed	2 hydraulic feed rollers
Feed rollers	Vertically
Rotordisc - diameter	960 mm with changable ejector wings
Rotordisc - Weight in kg	372
Number of knives	3 pcs.
Crane funnel	Big and open funnel in 6 mm plate with solid 40 mm frame
Crane	Crane flange for mounting of crane (fits to MOWI 300 and MOWI 400)
Chip lenght	12-25 mm (hydraulic ajustable)
Stress control system	TP PILOT K - complete box for installation in the tractors cabin
Anvil/Counter steel	1 vertical
Stress control system	TP PILOT K
Power required	100-160 kW (135-200 hp)
PTO rpm	1.000 rpm/min.
PTO shaft	Walterscheid 2580 series with freewheel, length = 860 mm
3-point linkage	Category 2
Chip capacity	40-50 m ³ /hour (Experience numbers by manuel operation)
Weight	1.600 kg (Excl. crane and crane support)

EXTRA EQUIPMENT

Short ejector spout	If the chips are not to be "throughn" across the tractor
Extended ejector spout	500 mm vertically • 1500 mm horisontally
Tip-up ejector spout	
Crane and crane control	We can offer different alternatives with MOWI cranes and operation
Sliverbreakers	Set with 12 pcs. - if special requirements for chip quality
Light bar	Light bar with complete set of rear lights
Tool kit	Includes tools for daily service and maintenance